

Allot Unified Management

Allot Gateway Manager

Centralized Visibility, Control and Security of All Network Traffic

The Allot Gateway Manager is a powerful control center for network-wide visibility, security, and policy-based management of application performance and user Quality of Experience (QoE). Applicable for small ISPs and mid-to-large enterprises, the Gateway Manager unifies network and security visibility and control into one all-inclusive and cost-effective form factor. Real-time and historical reporting dashboards help you understand how LAN, WAN, Internet, and data-center resources are being utilized by applications, users, and connected devices. Powerful policy enforcement helps you leverage that intelligence to ensure application performance, QoE, and network security according to your business priorities



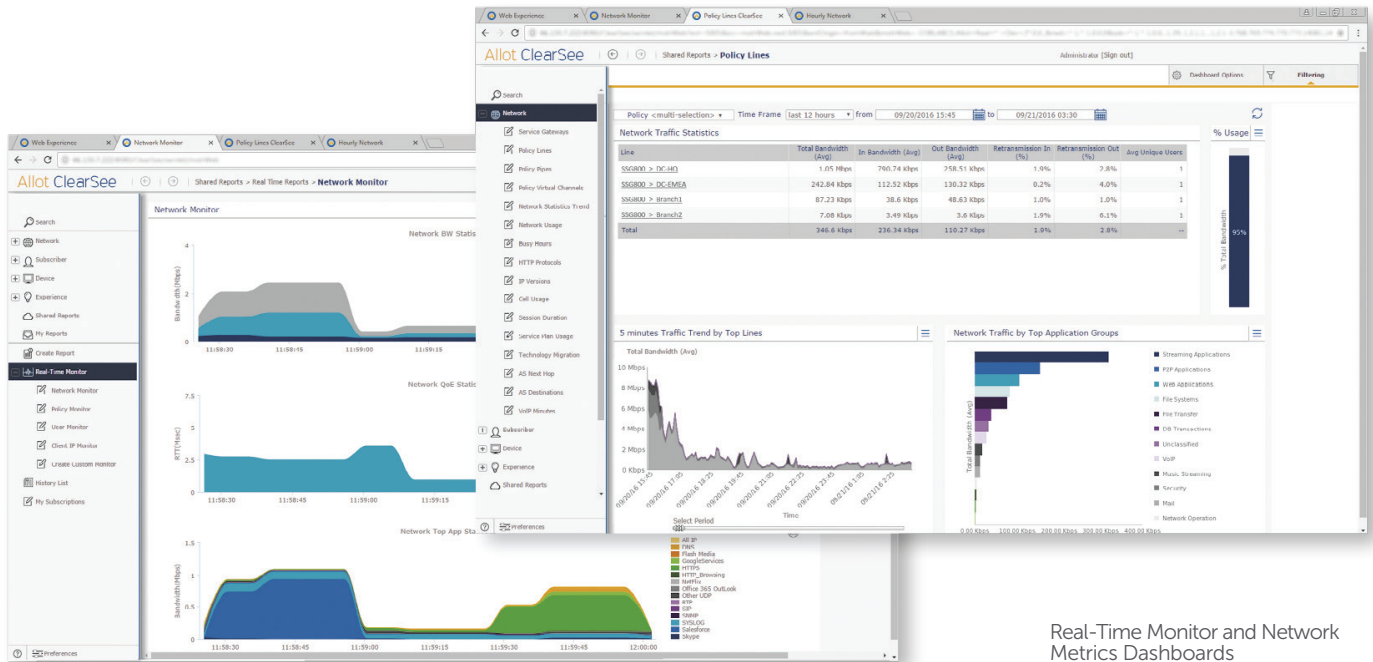
Benefits

- Complete visibility of all traffic and security events with customizable usage and event analytics dashboards.
- Valuable network intelligence to identify and manage business applications over recreational, shadow-IT, and other unsanctioned applications.
- Automate DDoS, bot and web-threat protection across your entire network.
- Identify network issues accurately and rapidly with real-time monitoring and reporting dashboards and easy drill-down to the most granular traffic and threat data.
- Simple policy toolkit for mapping Quality of Service (QoS), steering, mitigation, and filtering policies to complex data-center and cloud topologies.
- Easy administration with central software configuration and maintenance, and automatic propagation.

Features

Network Analytics to Understand Usage and Behavior

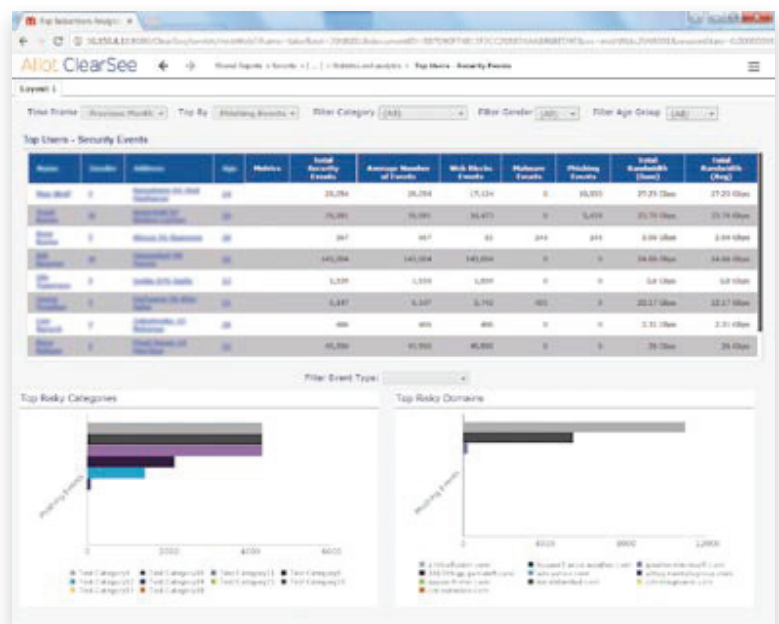
Allot's reporting and analytics dashboards turn your network data into meaningful information for the decision-makers in your organization. Real-time monitoring, usage metrics, QoE, and online behavior dashboards help you visualize application, user, and endpoint traffic, analyze their impact on network performance, and rapidly troubleshoot issues. Dashboard reports are interrelated and interactive. Drilling down, or changing the data fields of one report, instantly updates and refreshes the display of the other reports in the dashboard. It's easy to customize dashboard views, so the data you want is always at your fingertips. To share reports with others in your organization, you can schedule reports for automatic generation and distribution in PDF, HTML, XL, and CSV formats.



Real-Time Monitor and Network Metrics Dashboards

Web Threat Management to Protect Your Users

The Allot Gateway Manager makes it easy to provision and enforce Internet security and an Acceptable User Policy (AUP) that is correct for your organization. Company-wide policies can be defined to secure the workplace and block inappropriate content, while group and/or user-specific policies can be applied to improve productivity. User-friendly reports provide detail and summary statistics on all malware blocking events, frequently accessed content, URL filtering events triggered by your AUP, and other relevant statistics that may be presented per IP address, user, group, or other identifier.



Web Security Dashboard

Features

DDoS Threat Management to Protect Your Network

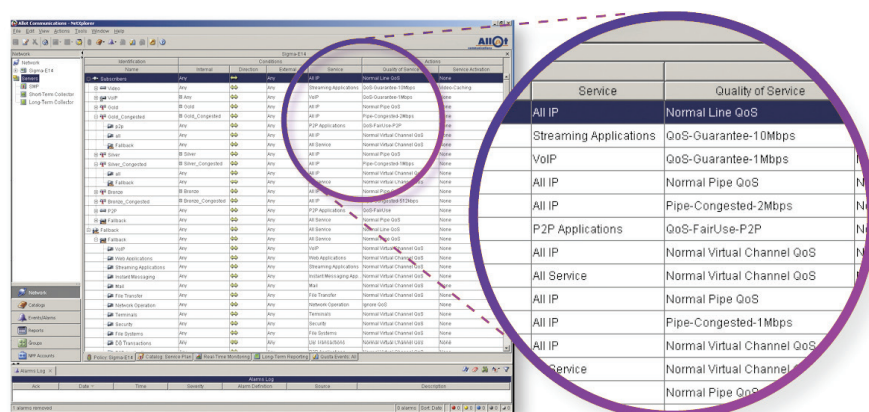
Allot's Gateway Manager automates DDoS threat protection across your entire network as attack alerts, mitigation reports, and post-attack intelligence provide a wealth of forensics information to help you pre-empt future attacks and take control. Real-time alerts notify you when an attack is detected, detailing the type of attack, the attack signatures that were created to surgically block attack packets, and the time it took to mitigate the attack. You also get granular and customizable mitigation logs, event analytics, and host infection analytics, as well as trend/distribution reports to support your security planning, threat management and operational decisions. Option for monitoring only with manual mitigation is also available.



LDAP Amplification Attack Pattern

Powerful Policy Control

Allot's Enforcement Policy Editor allows you to define traffic-management policies that link network and application performance to business goals and user expectations. An intuitive, hierarchical framework makes it easy to define dynamic QoS enforcement policies that will be triggered automatically as traffic conditions change. A policy may include any combination of access, priority, bandwidth allocation, shaping, steering, and blocking actions to be applied to application and subscriber traffic. Additionally, rich Command Line Interface (CLI) and Simple Object Access Protocol (SOAP) interfaces enable external systems to provision policies and distribute them to all managed elements.



Enforcement Policy Editor

One-Stop Configuration

Allot Gateway Manager is accessible to multiple concurrent clients and designed to manage widely dispersed network infrastructure. You get:

- Central control of network-wide setup, configuration and health monitoring of Allot SG & SSG platforms.
- Ability to scale up and out to manage distributed, multi-site deployment, and to process Gigabytes (GB) of monitoring data from Allot SG & SSG platforms.
- Automated propagation of policy updates and alarms to all platforms with on-demand audit log.
- Full admin and user identity management and authentication.

Allot Gateway Management System

The Allot Gateway Manager is available as a Virtual Edition (software only) or pre-installed on a 1U server appliance, or as software components designed to run on the following virtual machines: VMware ESXi (vSphere 5.5 or higher) or KVM (RedHat RHEL 6.7 and above).

Allot Gateway Manager Appliance

Capacity*	
Central Management for:	Up to 2 active Allot SG or SSG appliances, OR 4 appliances in Active Active, high availability configuration
Number of Hosts/Employees	Up to 20,000
Data Retention	Real-time: 5-minute data: 12 hours Hourly data: 48 hours Daily data: 31 days Monthly data: 12 months
System Interfaces	
Network Interfaces	4x1Gb (RJ45) + 2x10Gb (SFP+)
Management	iLO (RJ45)
Dimensions	
Appliance form factor	Standard 1U by 19" rack mount
Size (L x W x H)	69.85cm (27.5") x 43.47cm (17.11") x 4.32cm (1.7")
Weight (max)	15.31 kg (33.3 lb)
Power	
Input	100-127 VAC / 200-240 VAC
Number of PSUs	2
PSU Redundancy	1+1
Total Output Power	800W
Heat Dissipation	3207 BTU/hour (maximum)
Operating Environment	
Temperature	10° to 35°C (50° to 95°F) at sea level
Humidity	8% to 90% relative humidity
Altitude	3050 m (10,000 ft)
Regulations and Safety	
FCC Rating	Class A
Safety	EN 60950-1; IEC 60950-1
EMC (Electromagnetic Compliance)	AS/NZS CISPR 22; EN55022; EN55024; FCC CFR 47, Pt 15; ICES-003; CNS13438; GB9254, K22;K24; 61000-3-2; EN 61000-3-3

Allot Gateway Manager functions

Allot Gateway Manager bundles the following management functions

Management Function	vCPU (Intel x86 threads)	RAM (GB)	DISK (GB)	vNICs	Comments
Netexplorer Policy and Configuration (NX)	6	6	300	1 network adapter	
Data Mediation (DM)	12	32	300	1 network adapter	
ClearSee Network Metrics (CS)	10	32	1400	4 network adapters	Virtual edition sizing supports the same data-retention capacity as the Allot Gateway Manager appliance. Different data retention policy may require different disk capacities.
User/Subscriber Management Platform (SMP) for User Awareness	6	6	250	Per network environment	Provides full user visibility through integration with Active Directory domain controllers and LDAP server, and DHCP.
Web Security - NetworkSecure (NS)	8	12	310	N/A	
DDoS Protection (SPC)	8	16	300	N/A	

* Actual throughput and performance metrics depend on enabled features, policy configuration, traffic mix, and other deployment characteristics.