

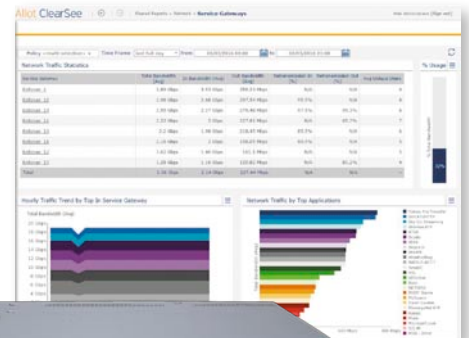
Allot High Performance Platforms

Allot SSG Network Management System



Central Management, Reporting and Analytics for Allot Secure Service Gateway (SSG) platforms

Allot Secure Service Gateway Network Management System (SSG NMS) provides a central vantage point for management and configuration of Allot SSG platforms, and a powerful control center for network-wide visibility, security and control of application performance and user quality of experience.



Feature Highlights

- Complete traffic and security event visibility
- Valuable network intelligence on applications, users, web threats, shadow IT, DDoS attacks, bot traffic
- Real-time monitoring and reporting dashboards
- Customizable usage and event analytics dashboards
- Easy drill-down to the most granular traffic and threat data
- Simple policy toolkit for mapping QoS, steering, mitigation, and filtering policies to complex data center and cloud traffic
- Central software configuration and maintenance with automatic propagation to multiple platforms



360° Visibility of Network Traffic

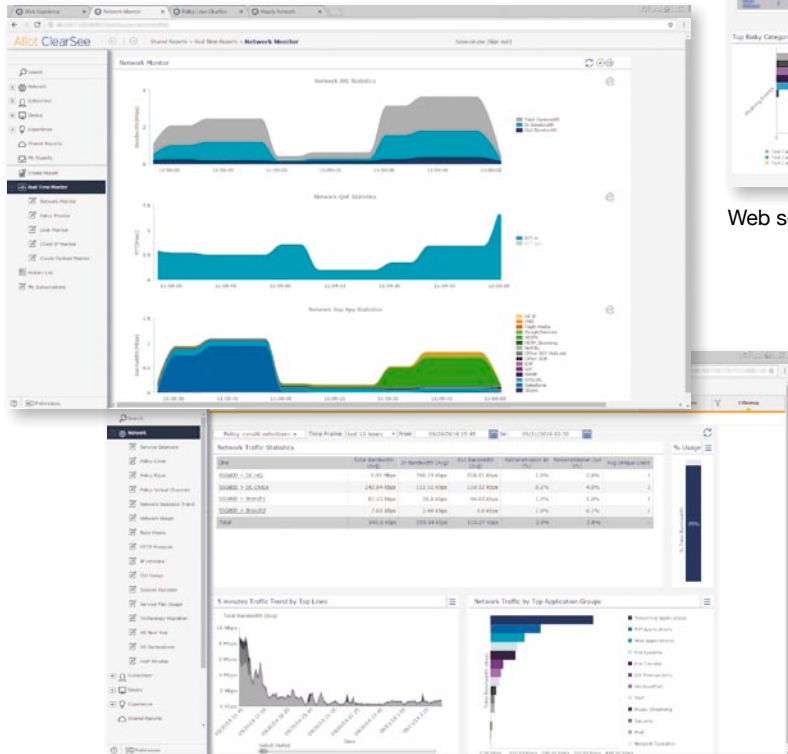
Allot SSG Network Management System gives you a bird's eye view of all the traffic on your network and the ability to control it. Reporting dashboards help you understand how LAN, WAN, Internet and datacenter resources are being utilized by applications, users and connected devices. Powerful policy enforcement helps you leverage that intelligence to assure application performance, quality of experience, and network security according to your business priorities.

Network Analytics to Understand Usage and Behavior

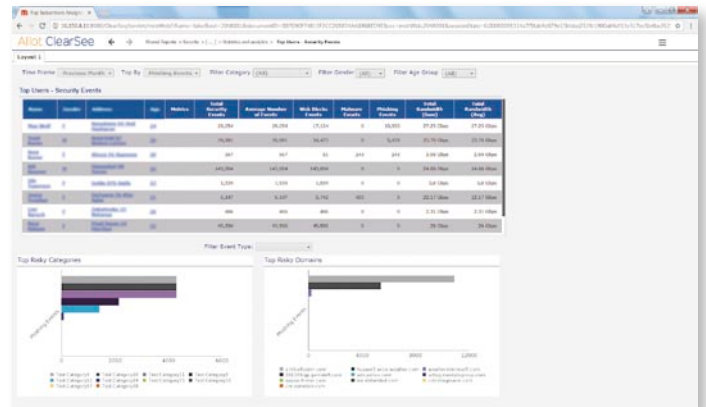
Allot's reporting and analytics dashboards turn your network data into meaningful information for your organization. Real-time monitoring, usage metrics, QoE and online behavior dashboards help you visualize application, user and endpoint traffic, analyze their impact on network performance, and troubleshoot issues rapidly. Dashboard reports are interrelated and interactive. Drilling down or changing the data fields of one report, instantly updates and refreshes the display of the other reports in the dashboard. It's easy to customize dashboard views, so the data you want is always at your fingertips. To share reports with others in your organization, you can schedule reports for automatic generation and distribution in Excel, HTML and CSV formats.

Web Threat Management to Protect Your Users

The Web Security interface in Allot SSG Network Management System makes it easy to provision and enforce the Internet Security and Acceptable User Policy (AUP) that is right for your organization. User-friendly reports provide detail and summary statistics on all malware blocking events, frequently accessed content, URL filtering events triggered by your AUP, and other relevant statistics that may be presented per IP address, user, group, or other identifier. With Allot, valuable threat-event data stays within your organization, avoiding the security risks that are inherent in cloud-based solutions.



Real-Time Monitor and Network Metrics Dashboards



Web security dashboard

Central Configuration and Control

DDoS Attack Management to Protect Your Network

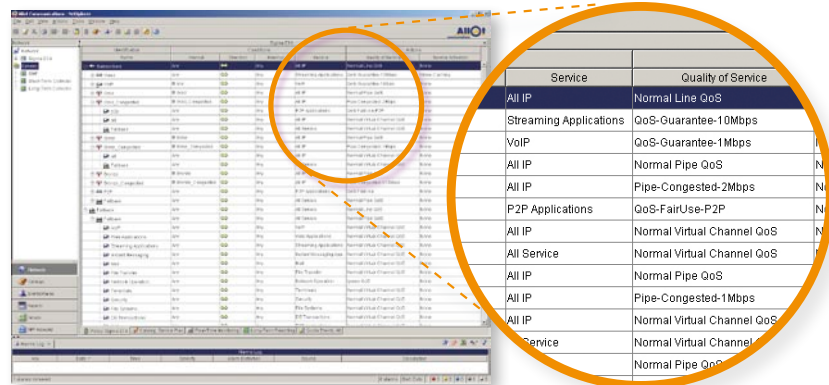
Allot SSG Network Management System automates DDoS threat protection across your entire network as attack alerts, mitigation reports, and post-attack intelligence help you take control. Real-time alerts notify you when an attack is detected, detailing the type of attack, the attack signature that was created to surgically block attack packets, and the time it took to mitigate the attack. You also get granular and customizable mitigation logs, event analytics, and host infection analytics, as well as trend/distribution reports to support your security planning, threat management and operational decisions. Option for monitoring only with manual mitigation is also available.



LDAP Amplification Attack Pattern

Powerful Policy Control

Allot's Enforcement Policy Editor allows you to define traffic management policies that link network and application performance to business goals and user expectations. An intuitive, hierarchical framework makes it easy to define dynamic QoS enforcement policies that will be triggered automatically as traffic conditions change. Enforcement policy may include any combination of access, priority, bandwidth allocation, shaping, steering, and blocking actions to be applied to application and subscriber traffic. Additionally, rich Command Line Interface (CLI) and Simple Object Access Protocol (SOAP) interfaces allow external systems to provision policies and distribute them to all managed elements.



Enforcement Policy Editor

One-Stop Configuration

Allot SSG Network Management System is accessible to multiple concurrent clients and designed to manage widely dispersed network infrastructure. You get:

- Central control of network-wide setup, configuration and health monitoring of Allot SSG platforms
- Ability to scale up and out to manage distributed, multi-site deployment, and to process Gigabytes (GB) of monitoring data from Allot SSG platforms
- Automated propagation of policy updates and alarms to all platforms, with on-demand audit log
- Full admin and user identity management and authentication



Allot SSG Network Management System

Allot SSG Network Management System is available pre-installed on a 1U server appliance, or as software components designed to run on virtual machines: VMWare ESXi (vSphere 5.5 or higher) or KVM (RedHat RHEV 3.5 and above).

Allot SSG NMS Appliance

Capacity	Central Management for:	Up to 2 active Allot Secure Service Gateway appliances, OR 4 appliances in Active-Active, high availability configuration
	Number of Employees	Up to 20,000
	Data Retention	Real-time: 5-minute data: 12 hours Hourly data: 48 hours Daily data: 31 days Monthly data: 12 months
System Interfaces	Network Interfaces	4x1Gb (RJ45) + 2x10Gb (SFP+)
	Management	iLO (RJ45)
Dimensions	Appliance form factor	Standard 1U by 19" rack mount
	Size (L x W x H)	69.85cm (27.5") x 43.47cm (17.11") x 4.32cm (1.7")
	Weight (max)	15.31 kg (33.3 lb)
Power	Input	100-127 VAC / 200-240 VAC
	Number of PSUs	2
	PSU Redundancy	1+1
	Total Output Power	800W
	Heat Dissipation	3207 BTU/hour (maximum)
Operating Environment	Temperature	10° to 35°C (50° to 95°F) at sea level
	Humidity	8% to 90% relative humidity
	Altitude	3050 m (10,000 ft)
Regulations and Safety	FCC Rating	Class A
	Safety	EN 60950-1; IEC 60950-1
	EMC (Electromagnetic Compliance)	AS/NZS CISPR 22; EN55022; EN55024; FCC CFR 47, Pt 15; ICES-003; CNS13438; GB9254, K22;K24; 61000-3-2; EN 61000-3-3

Allot SSG NMS Virtual Edition

The virtual edition sizing information shown in the table below supports up to 20,000 users and 2 active Allot Secure Service Gateway platforms (or 4 platforms in Active-Active redundancy mode).

Management Function	vCPU (Intel x86 threads)	RAM (GB)	DISK (GB)	vNICs	Comments
Policy and Configuration (NX)	6	6	300	1 network adapter	
Data Mediation (DM)	12	32	300	1 network adapter	
Network Metrics (CS)	10	32	1400	4 network adapters	Virtual edition sizing supports the same data retention capacity as Allot SSG NMS appliance. Different data retention policy may require different disk capacity.
User Awareness Interface (SMP)	6	6	250	Per network environment	
Web Security (WSP)	8	12	310	N/A	
DDoS Protection (SPC)	8	16	300	N/A	

Actual throughput performance metrics depend on enabled features, policy configuration, traffic mix, and other deployment characteristics.

Contact us: sales@allot.com

Americas: 300 TradeCenter, Suite 4680, Woburn, MA 01801 USA Tel: +1 (781) 939-9300 Fax: +1 (781) 939-9393 Toll free: 877-255-6826 • **Europe:** NCI – Les Centres d’Affaires Village d’Entreprises ‘Green Side’, 400 Avenue Roumanille, BP309, 6906 Sophia Antipolis Cedex, France Tel: +33 (0) 4-93-001160, Fax: +33 (0) 4-93-001165 • **Asia Pacific:** 25 Tai Seng Avenue, #03-03, Scorpio East Building, Singapore 534104 Tel: +65 67490213 Fax: +65 68481015 • **Japan:** 4-2-3-301 Kanda Surugadai, Chiyoda-ku, Tokyo 101-0062 Tel: +81 (3) 5297-7668 Fax: +81(3) 5297-7669 • **Middle East and Africa:** 22 Hanagar St., Industrial Zone B, Hod-Hasharon, 4501317, Israel, Tel: +972 (9) 761-9200, Fax: +972 (9) 744-3626

www.allot.com info@allot.com

© 2017 Allot Communications Ltd. All rights reserved. Allot Communications, Sigma and NetEnforcer and the Allot logo are trademarks of Allot Communications. All other brand or product names are the trademarks of their respective holders. The information in this document is for reference purpose only and constitutes neither an offer, a commitment nor an acceptance. Allot may change the information at any time without notice.

